



# ASSEMBLY INSTRUCTION

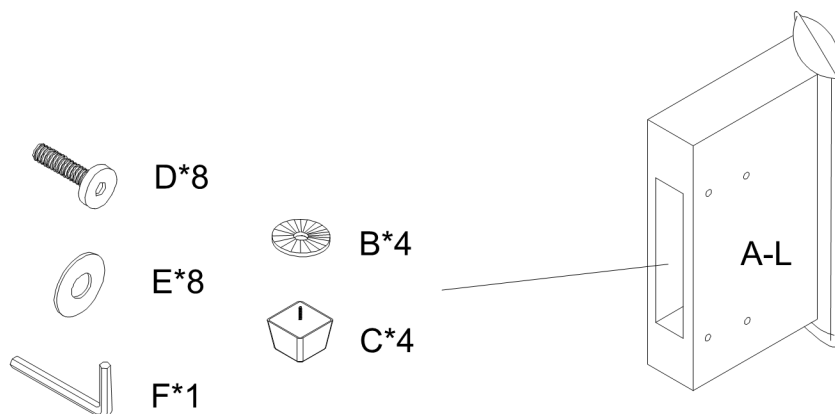
ITEM NO.: 8450TPE/PWT-A  
2arms with adjustable pillow top



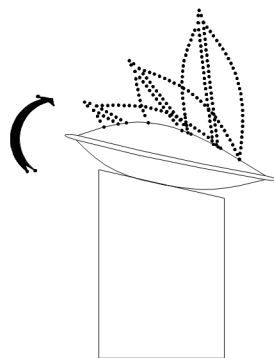
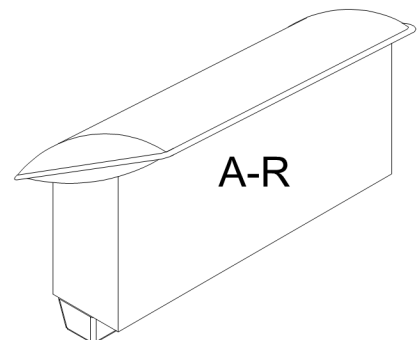
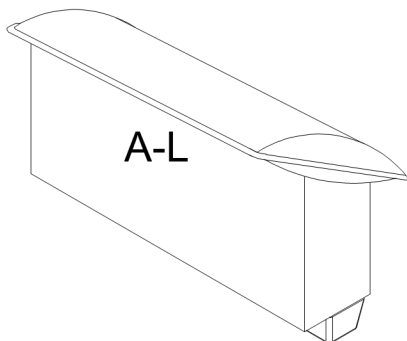
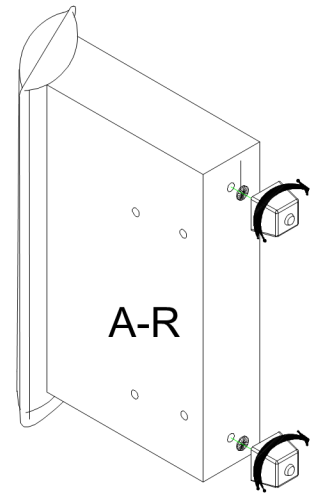
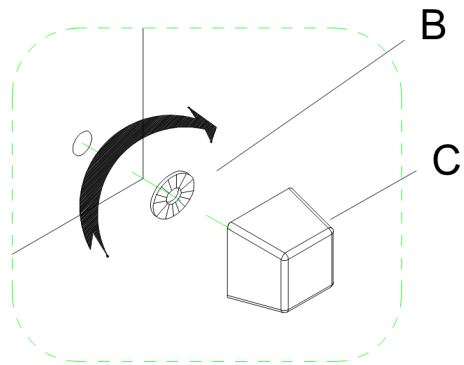
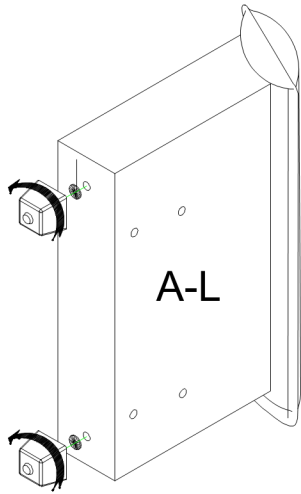
**NOTE:** Do not use power tools for assembly. Power tools increase the risk of over tightening which lead to splitting or cracking the wood.

## ARM COMPONENT LIST

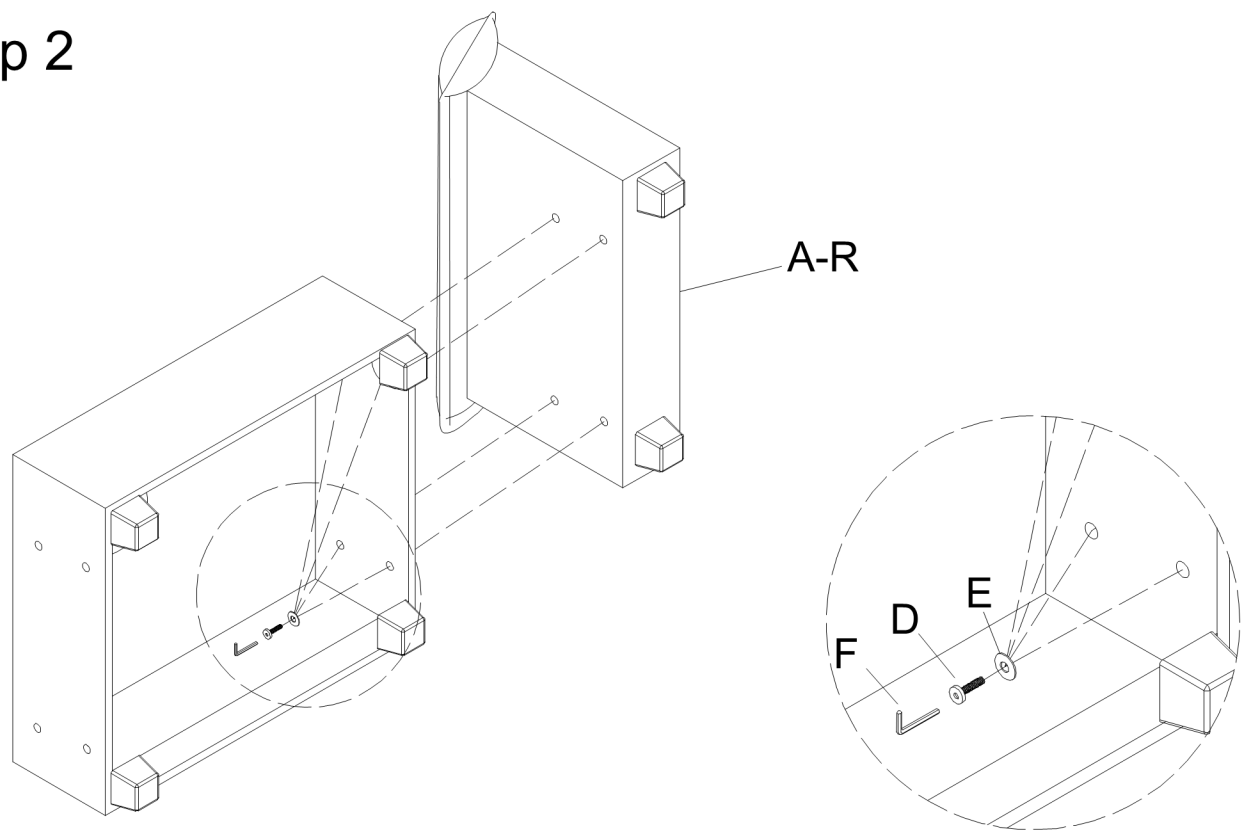
NO	DRAWING	QTY	Description
A-L		1	L LSF ARM
A-R		1	R RSF ARM
B		4	Plastic Washer(( $\Phi$ 45*3mm)
C		4	PLASTIC LEG(80*80*80mm)
D		8	BOLT M8*60mm
E		8	WASHER( $\Phi$ 19*1.5mm)
F		1	ALLEN KEY



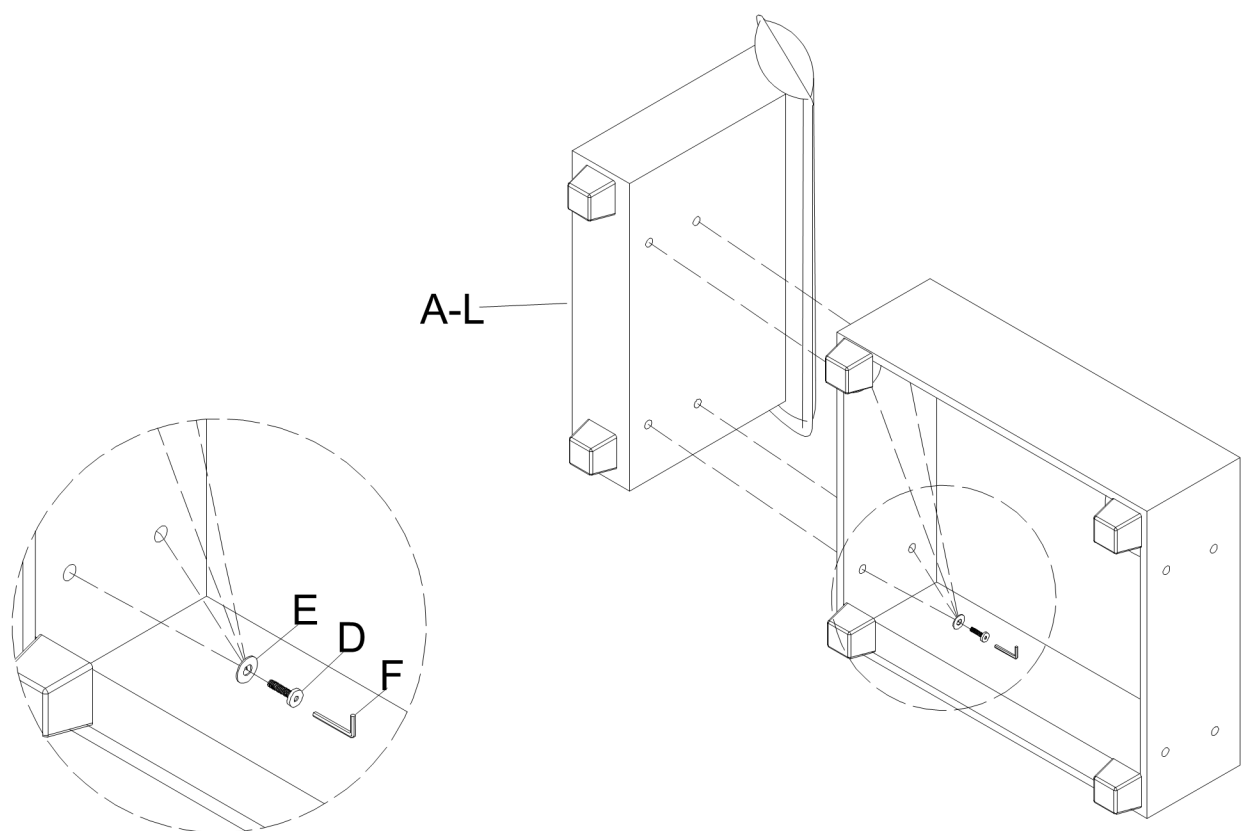
# Step 1

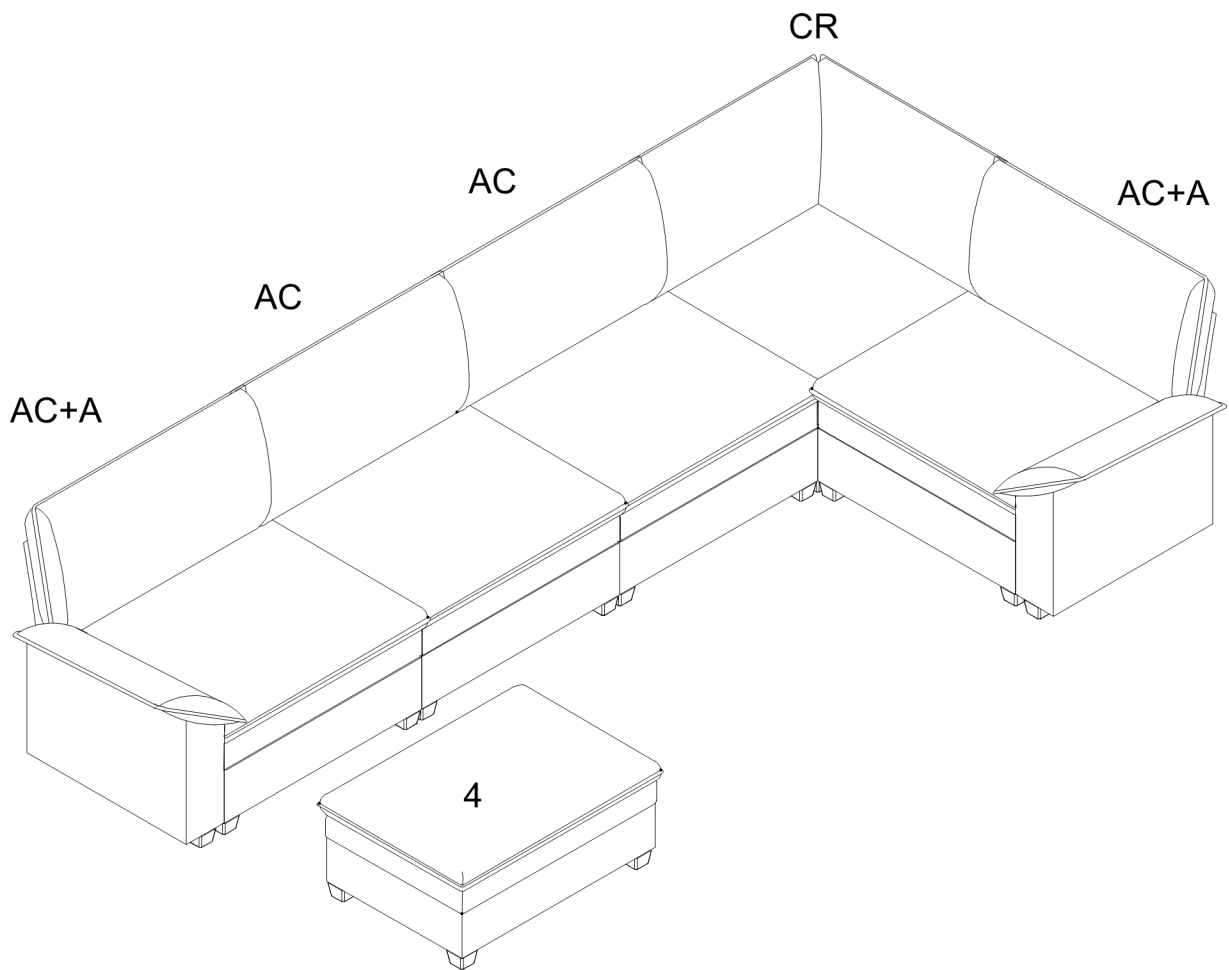


## Step 2



## Step 3





### **Care Instruction for Chenille Furniture:**

**In order to maintain the original appearance of your Chenille furniture, please follow below simple care procedures:**

**Avoid exposing furniture directly to sunlight or heating and air conditioning outlets. Sunlight and or exposure to heating and air conditioning outlets will fade/damage Chenille.**

**Vacuum or wipe with a soft cloth to remove dust.**

**Hardware may loosen over time. Periodically check to make sure all connections are tight, Re-tighten if necessary.**

**For item use on wooden floor, hard surfaces or carpets, it is recommended to install protective pads under all legs and supports to avoid/prevent from damages/scratches and discoloration.**