

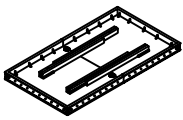

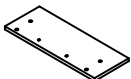

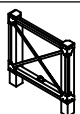











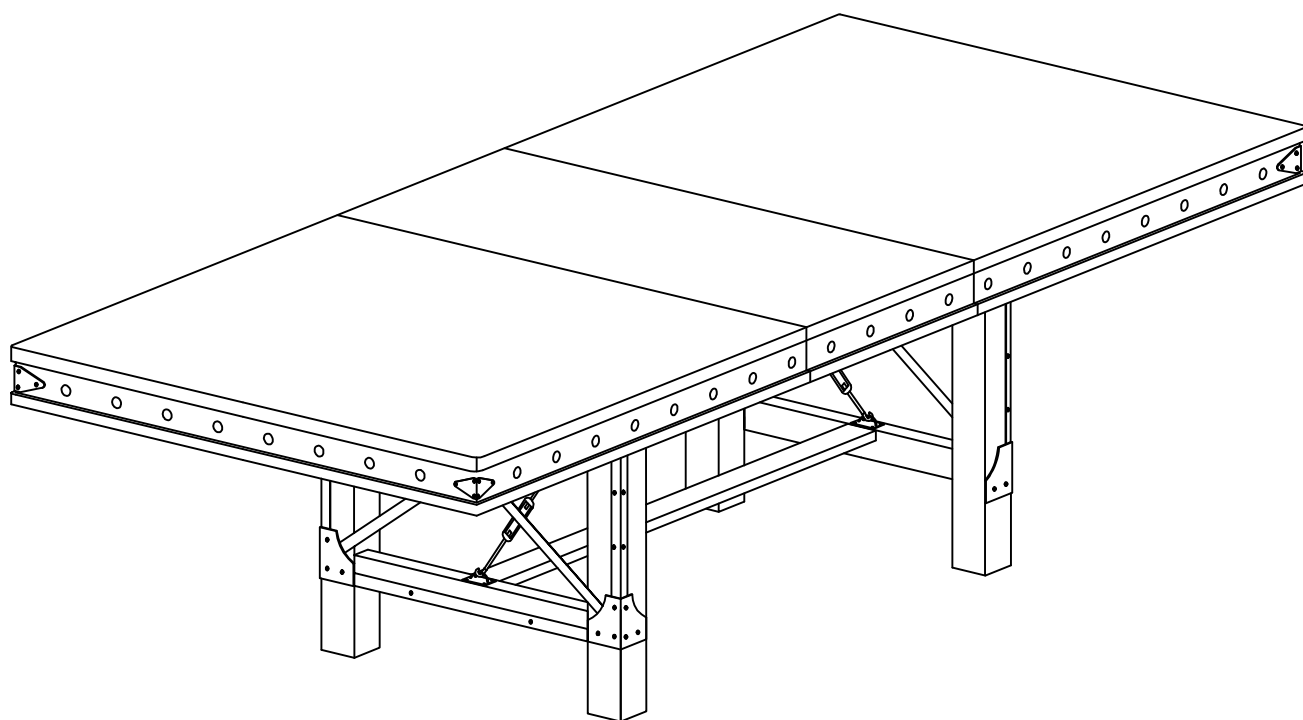
# ASSEMBLY INSTRUCTION

ITEM NO: 5179 - 90 DINING TABLE

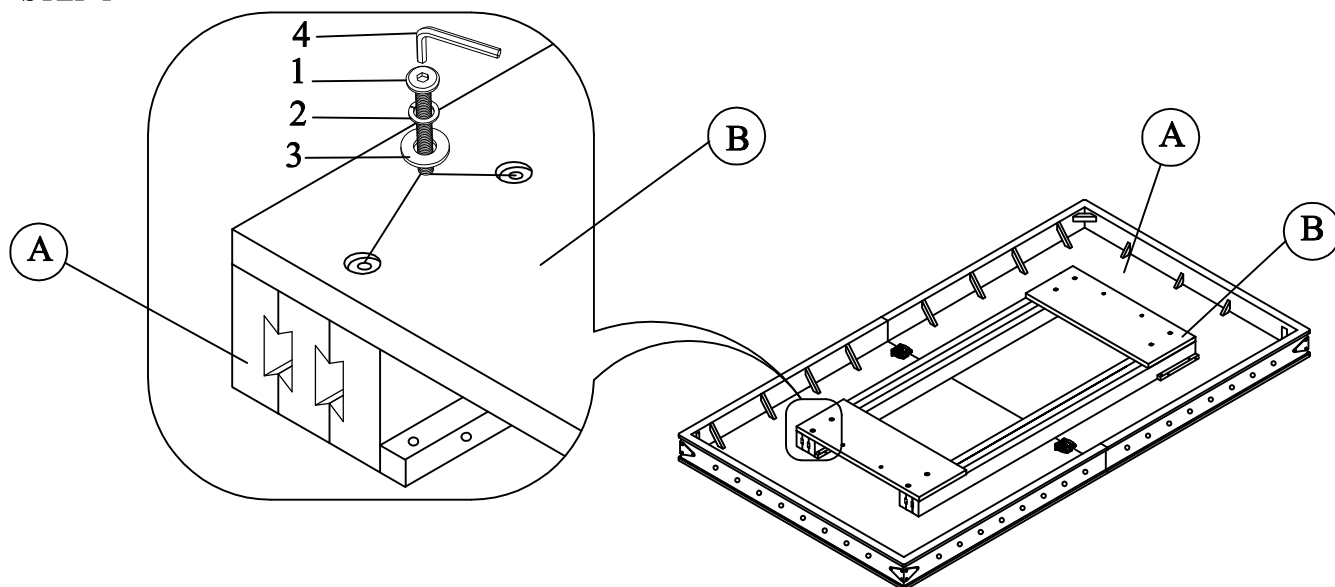
HOME ELEGANCE

**Thank you for purchasing this quality product. Be sure to check all packing material carefully for small parts that may have come loose inside the carton during shipment.**

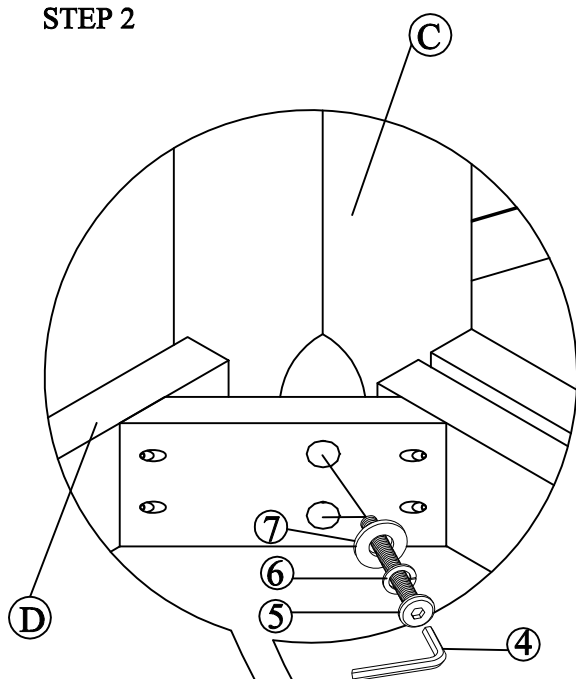
PART LISTS				HARDWARE LISTS				
NO.	Description	Sketch	Q'ty	NO.	Description	Sketch	Size	Q'ty
A		TABLE TOP	1pc	1	BOLT		Ø1/4"*38mm	12PCS
B		MOUNTING PANEL	2pcs	2	LOCK WASHER		Ø1/4"x10D*1.1mm	12PCS
C		LEG FRAME	2pc	3	FLAT WASHER		Ø1/4" 22Dx2mm	12PCS
D		APRON FRAME	1pc	4	ALLEN WRENCH		12 x 90 mm	1PC
E		CENTER STRETCHER	1pcs	5	BOLT		Ø5/16"*65mm	8PCS
F		METAL CROSS BAR	2set	6	LOCK WASHER		Ø5/16"x 10D*1.1mm	8PCS
				7	FLAT WASHER		Ø1/16" 22Dx2mm	8PCS
				8	SHORT SCREW		Ø9*38mm	2PCS



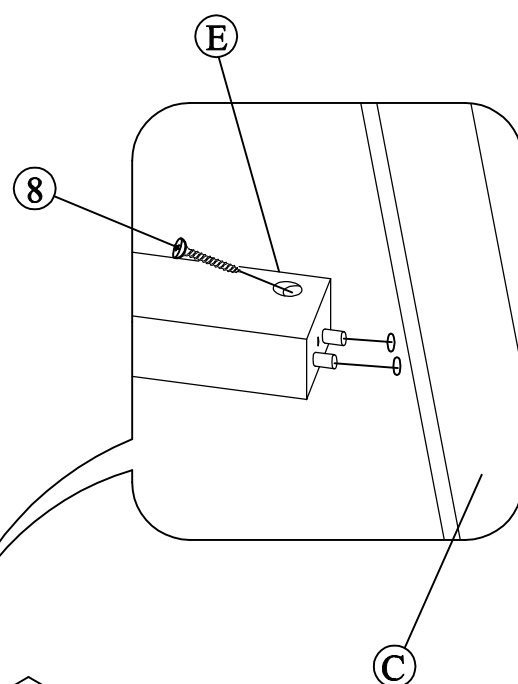
# STEP 1



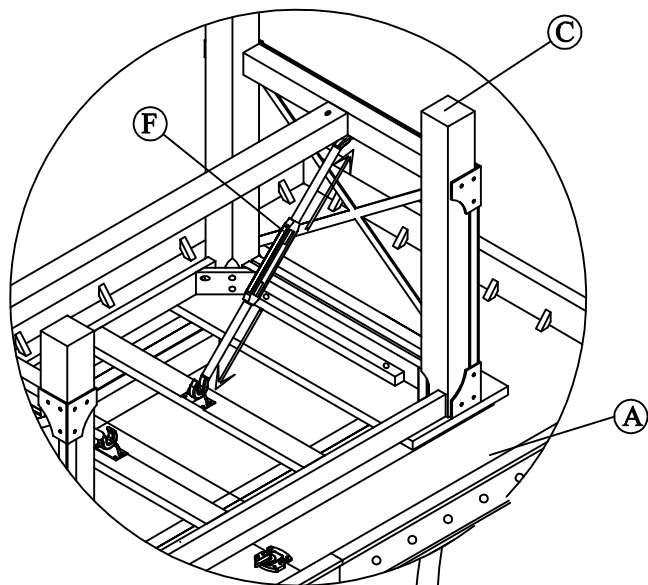
# STEP 2



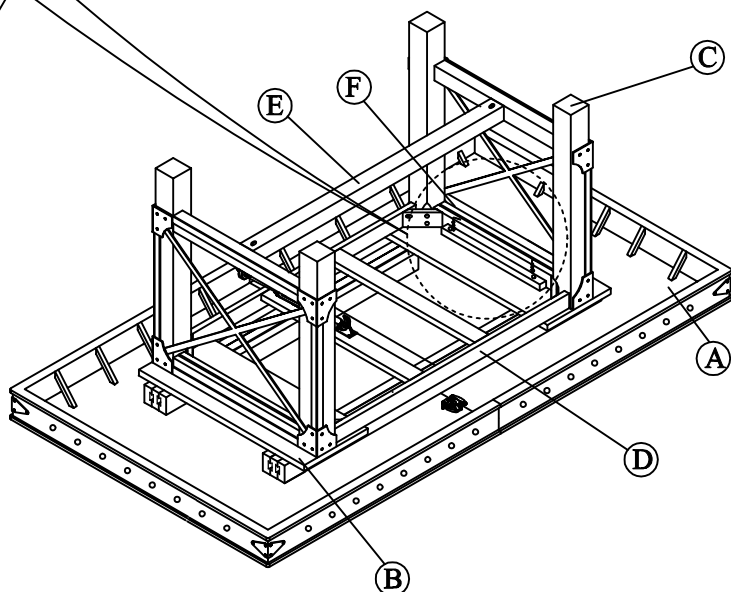
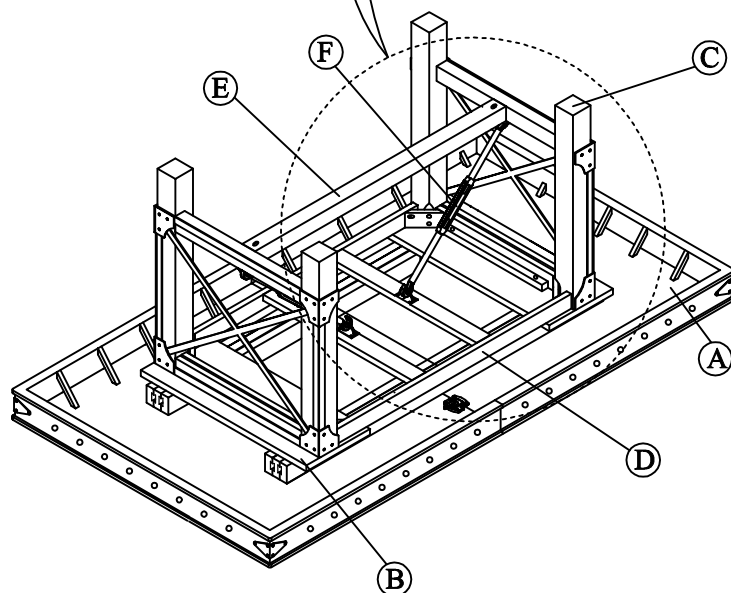
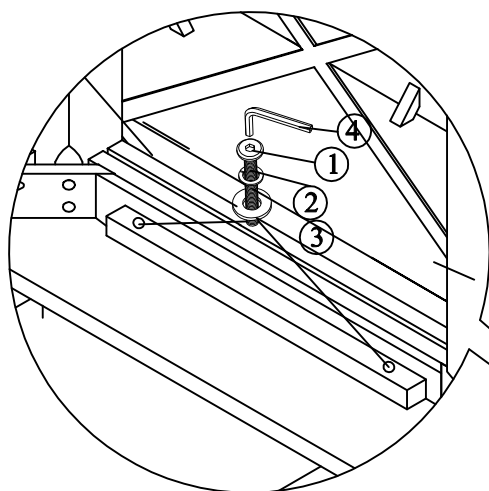
# STEP 3



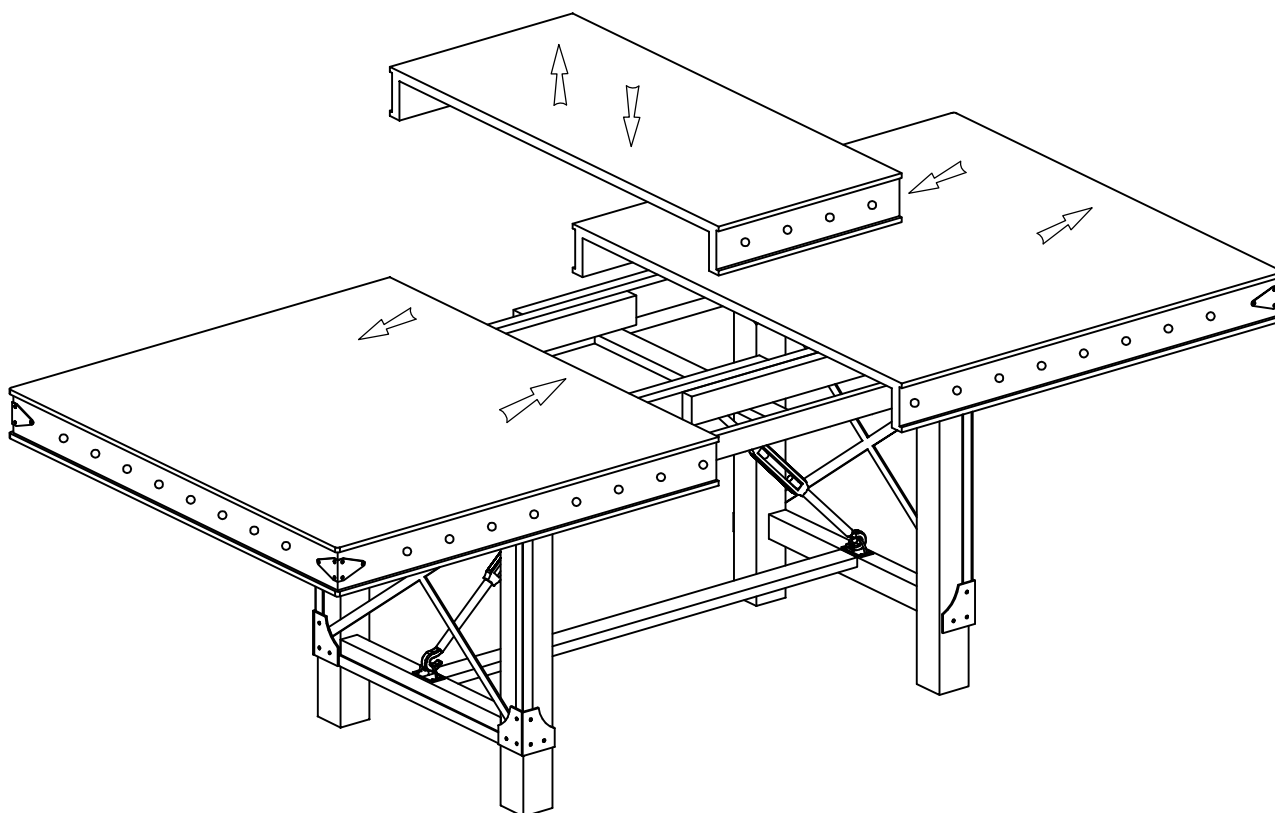
**STEP 5 Assemble the metal cross bar**



**STEP 4 Secure table base to top**



## STEP 5



For items use on wooden floor, hard surfaces or carpets, it is recommended to Install protective pads under all legs and supports to avoid/prevent from damages/scartches and discoloration