



ASSEMBLY INSTRUCTION

ITEM # : 2056 - 5 DRESSER
2056 - 6 MIRROR

PART LIST

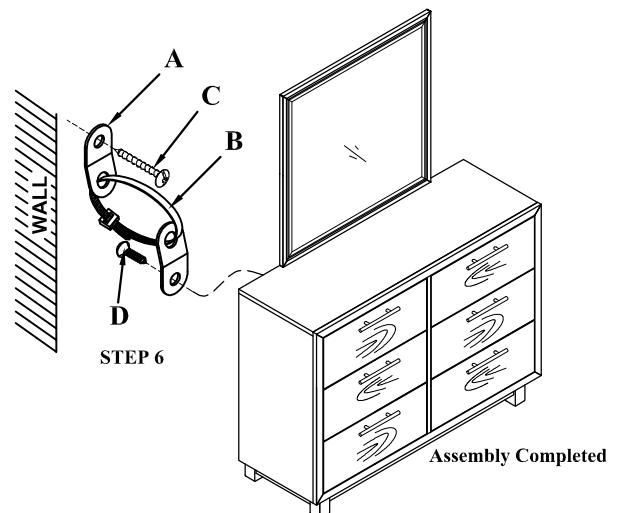
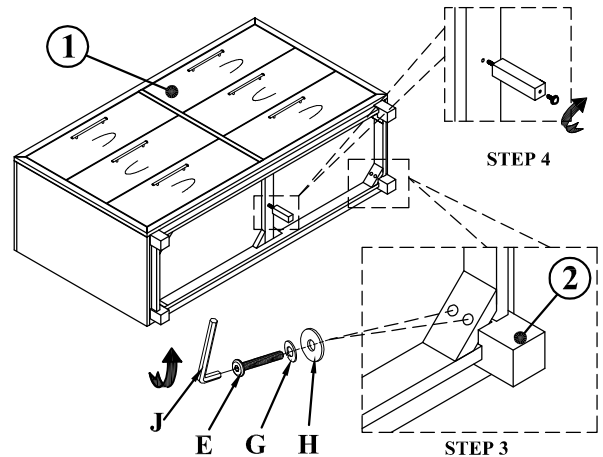
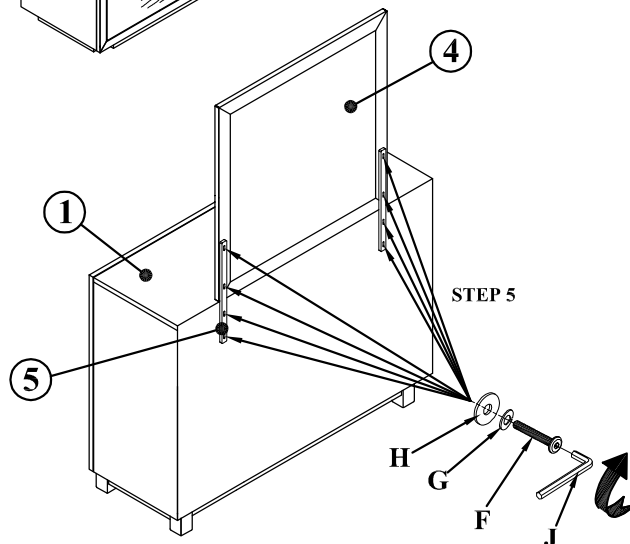
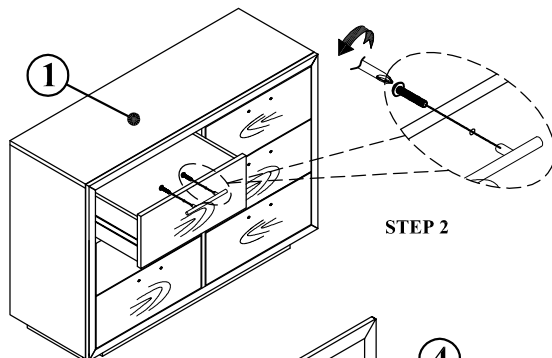
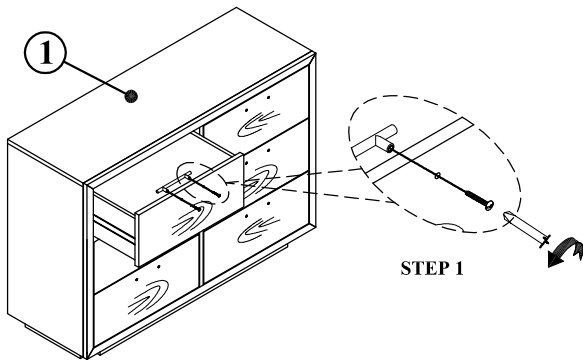
| | | |
|---|--------------------|------|
| 1 | DRESSER | 1PC |
| 2 | BUN FOOT | 4PCS |
| 3 | MIDDLE SUPPORT LEG | 1PC |
| 4 | MIRROR | 1PC |
| 5 | MIRROR SUPPORT | 2PCS |

ANTI-TIPPING HARDWARE PACK IN - 5

| | | | |
|---|--|-------------------------|------|
| A | | BRACKET | 2PCS |
| B | | TIE WRAP | 1PC |
| C | | LONG SCREW (#8 x 2") | 1PC |
| D | | SHORT SCREW (#8 x 5/8") | 1PC |

HARDWARE LIST IN - 6

| | | | |
|---|--|------------------------|-------|
| E | | BOLT (Ø 1/4" x 2") | 8PCS |
| F | | BOLT (Ø 1/4" x 1-3/8") | 8PCS |
| G | | SPRING WASHER (Ø1/4") | 16PCS |
| H | | FLAT WASHER (Ø1/4") | 16PCS |
| J | | ALLEN KEY | 1PC |



MADE IN VIETNAM



For items use on wooden floor, hard surfaces or carpets, it is recommended to install protective pads under all legs and supports to avoid/prevent from damages/scratches and discoloration.