


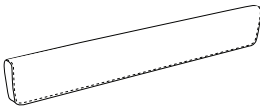
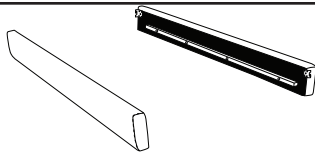
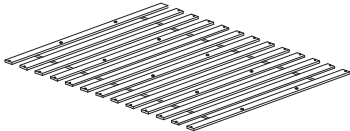


Assembly Instruction
(76") EASTERN KING SIZE BED
ITEM NO.:



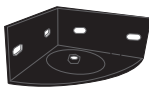
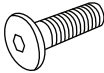


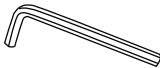

1860K-1EK (1/2) (76") EASTERN KING HEADBOARD
1860K-3EK (2/2) (76") EASTERN KING FOOTBOARD & RAILS & SLATS

NOTE: Do not use power tools for assembly. Power tools increase the risk of over tightening which leads to splitting or cracking the wood.

COMPONENT LIST

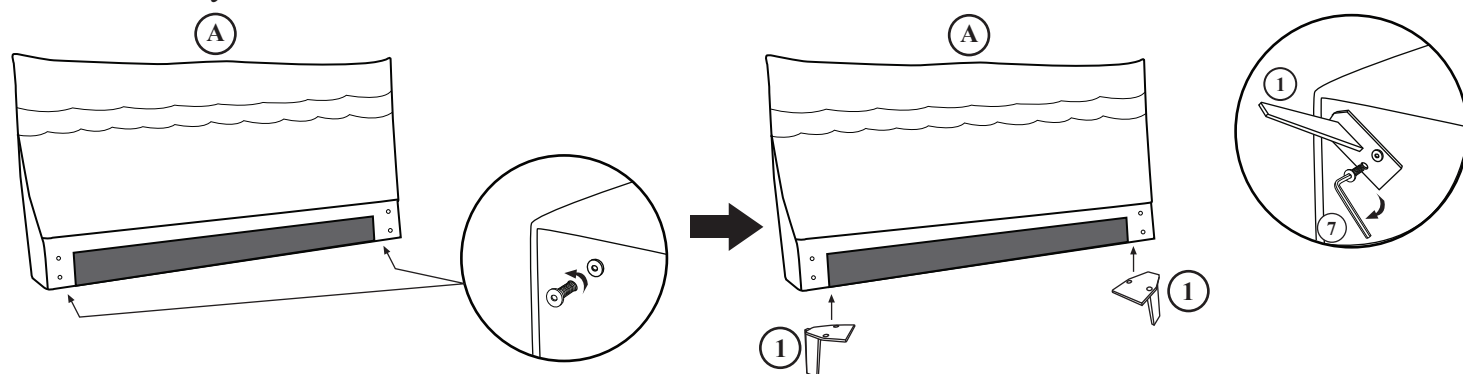
NO.	DRAWING	QTY	DESCRIPTION
A		1 PC	HEADBOARD
B		1 PC	FOOTBOARD
C		2 PCS	SIDE RAIL
D		1 ROLL	13PCS SLAT/ROLL

HARDWARE LIST (PACK IN -3)

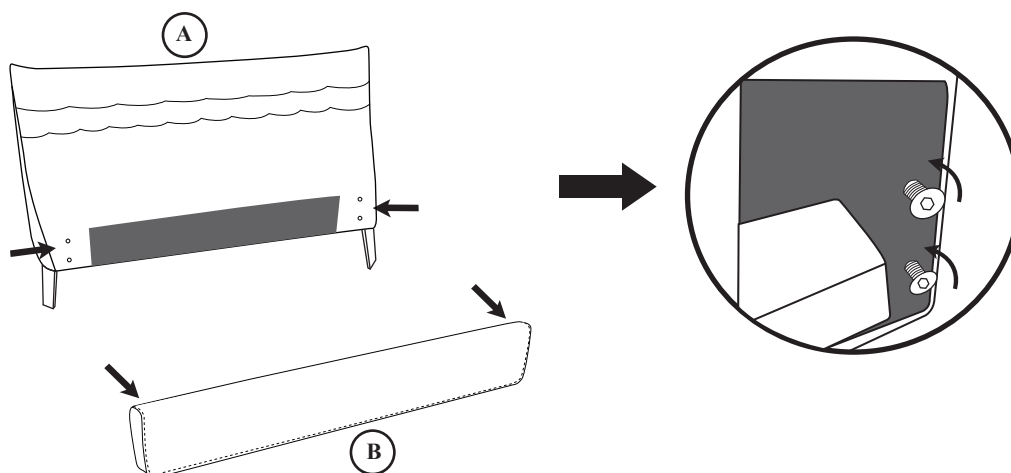
NO.	DRAWING	QTY	DESCRIPTION
1		4 PCS	METAL LEG
2		10 PCS	CENTER SUPPORT LEG WITH LEVELER
3		2 PCS	METAL BRACKET
4		4 PCS	BOLT 5/8-18-1"
5		4 PCS	NUT
6		26 PCS	SCREW 35MM
7		1 PC	ALLEN KEY
8		1 PC	WRENCH

STEP#1

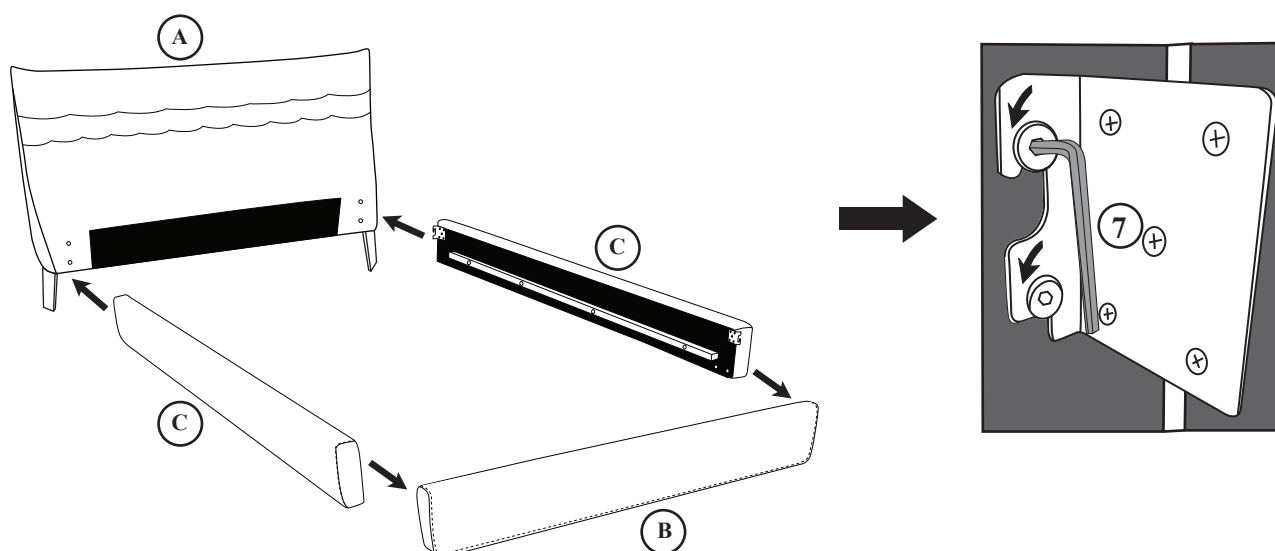
Release bolts locate on headboard bottom, align legs to pre-drilled holes, insert bolts and tighten with Allen key.

**STEP#2**

Turn counterclockwise to untighten bolts on headboard and footboard for side rails assembly.

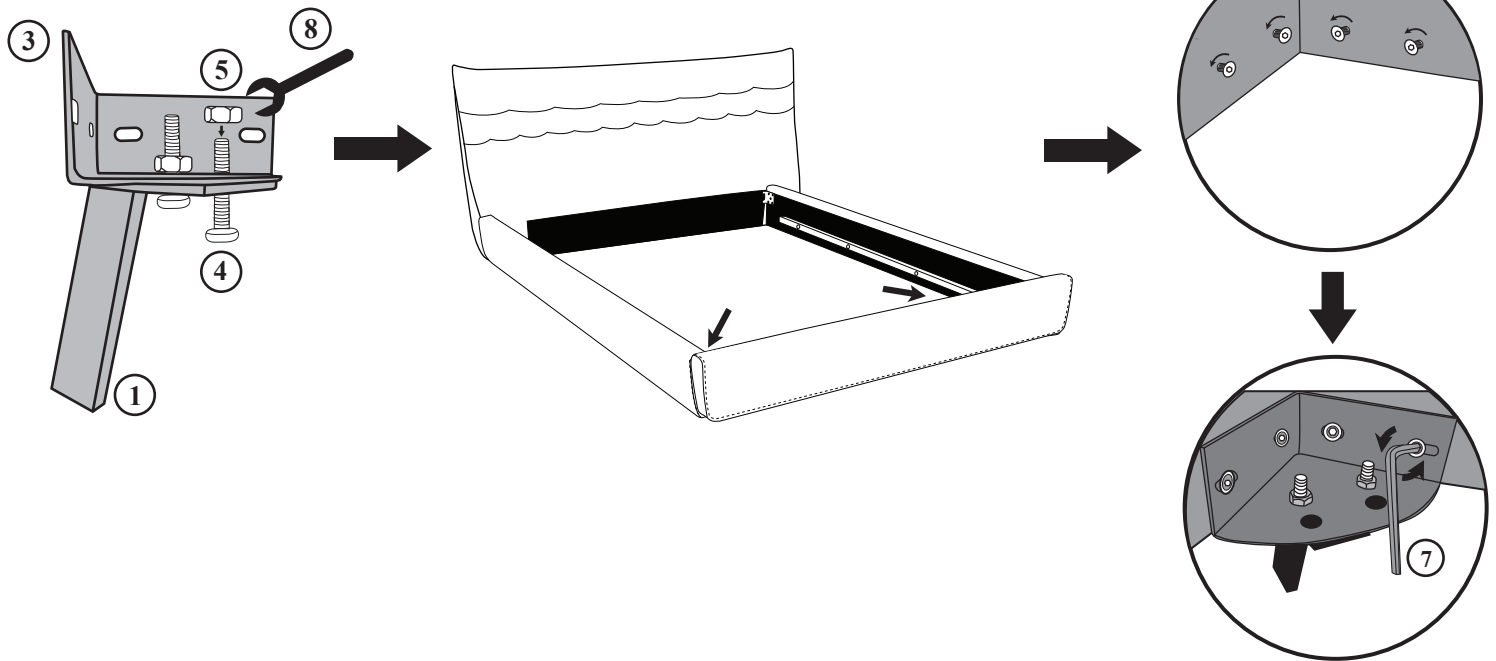
**STEP#3**

Align and hook on the side rails to the headboard and footboard, tighten bolts with Allen Key.

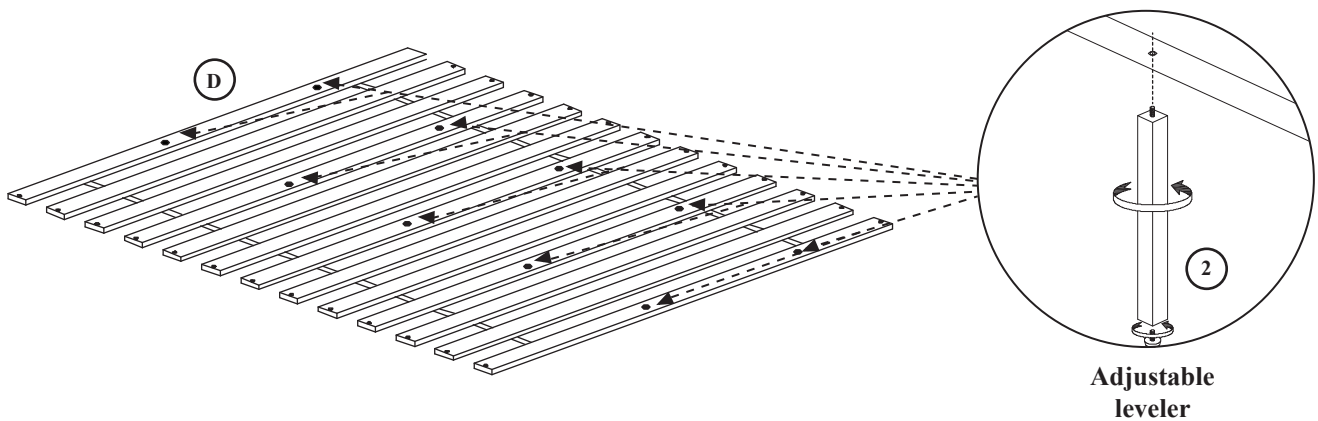


STEP#4

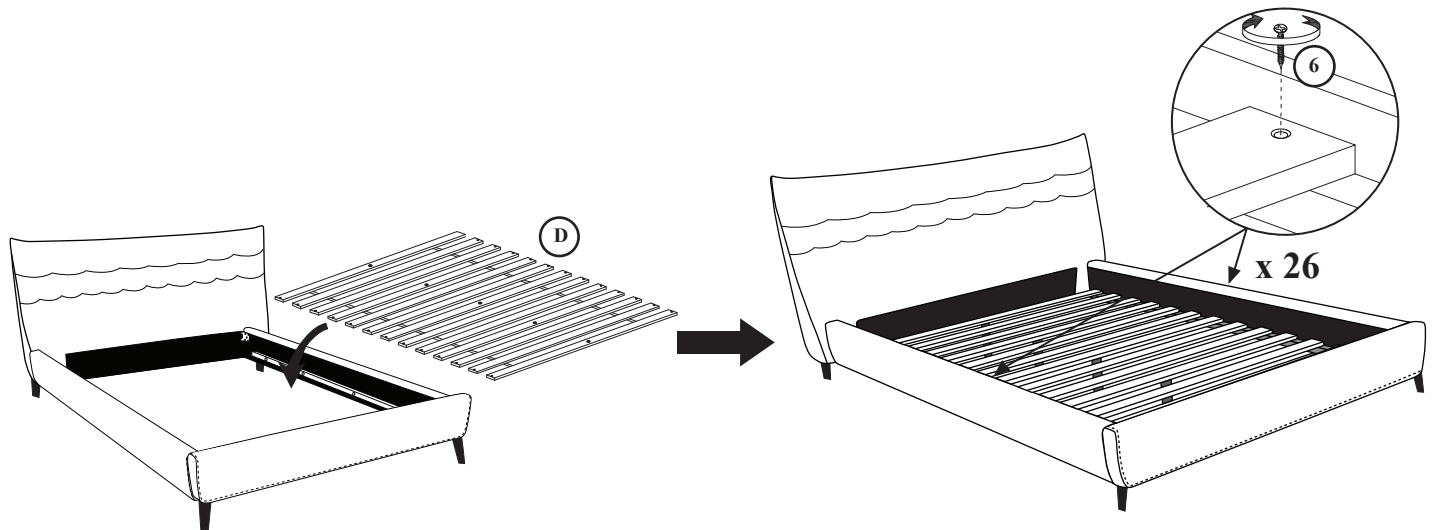
Attach metal legs to metal brackets, insert bolts and nuts and tighten with wrench. Release bolts on footboard and rails, attach metal brackets to the pre-drilled holes, insert bolts and tighten with Allen key.

**STEP#5**

Rotate to tighten slat support legs.

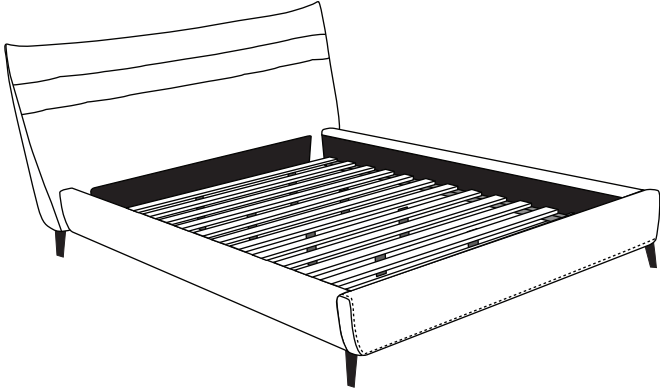
**STEP#6**

Align and place slat roll onto the bed frame, insert screws to tighten it.



STEP#7

Assembly completed.

**CARE INSTRUCTION FOR POLYESTER:**

In order to maintain the original appearance of your polyester furniture, please follow below simple care procedure :

- Avoid exposing furniture directly to sunlight or heating and air conditioning outlets. Exposure to sunlight or heating and air conditioning outlets will fade/damage polyester.
- Wipe gently with a damp soft cloth to remove dust, dirt and any grime build up.

PLEASE KEEP ASSEMBLY INSTRUCTION FOR FUTURE REFERENCE